

# Quality Timber Cladding

M.H. Southern & Co. Ltd.

**MHS**

Timber Importers & Sawmillers  
since 1913

**MHSouthern.co.uk**

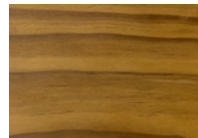


# Species

Our choice of six beautiful timber species, all from sustainable sources, will help you create responsible and beautiful designs for your next interior or exterior cladding project.



\* accoya



Abodo®  
Vulcan\*



Western  
Red Cedar\*



British  
Larch\*



Clear  
Douglas Fir



Thermowood  
Radiata Pine

# Profiles

Each species is machined to order in twelve traditional profile designs. We can also produce bespoke profiles to suit all applications, and offer expert advice on the most appropriate timber for each project.



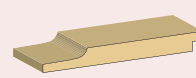
MHS 112



MHS 6600\*



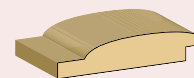
MHS 6610



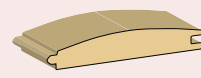
MHS 6620\*



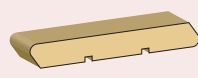
MHS 6625



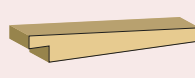
MHS 6645



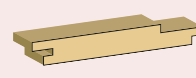
MHS 6650



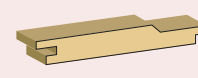
MHS 6660



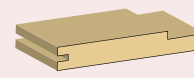
MHS 6670



MHS 6680



MHS 6690\*



MHS 9014

## Ex Stock Cladding

### Abodo - Ex 25 x 150mm x 4.8m\*\*

- Dressed to profile MHS 6620 shiplap, fin 20 x 140 (130 face) for horizontal application
- Dressed to profile MHS 6690 channel lining, fin 20 x 140 (121 face) for vertical application

### Kiln dried British Larch - Ex 25 x 150mm x 3.6/4.8m\*\*

- Dressed to profile MHS 6620 shiplap, fin 20 x 145 (135 face) for horizontal application
- Dressed to profile MHS 6690 channel lining, fin 20 x 145 (126 face) for vertical application

### Kiln dried Western Red Cedar - Ex 25 x 150mm. Lengths 1.83 - 4.88m\*\* (subject to stock)

- Dressed to profile MHS 6600 TGV1S, fin 20 x 144 (137 face) for vertical application
- Dressed to profile MHS 6690 channel lining, fin 20 x 144 (125 face) for vertical application

\*Also available in our Ex Stock range. Abodo is a registered trade mark owned by Abodo Wood Limited. \*\*CoC Certified available.

# Treatments & Finishes

To ensure the very best performance, we can add a choice of proven, industrially applied preservative or fire retardant protection that give you and your customers peace of mind.



**TANALISED** timber is impregnated with **TANALITH E** wood preservative in our controlled, high pressure vacuum impregnation plant for long term protection against decay and insect attack. The treated timber has a natural green colouration which slowly weathers to a warm, honey brown, before becoming a natural silver grey in the long term.



We also offer **TANATONE** treatment for your cladding. All the protection benefits of **TANALISED** timber but with a rich brown colour already added.



**VACSOL Aqua** is industrially applied in our controlled, low pressure, double vacuum plant. This gives an outer envelope of protection to the cladding timbers, allowing the wood to dry quicker and helping to retain its original dimensions.

**CHARRED & CINDERED** is a traditional Japanese wood-burning technique which involves charring the wood's surface, cooling it with water, then sealing it. The technique is designed to make the wood fire-resistant with the added bonus of a beautiful, textured charcoal finish. A low-maintenance finish designed to last a lifetime.

**SENTRIN FRX FIRE RETARDANT** treated timber has been pressure impregnated with Exterior Fire-X, a leach resistant (Type LR) formulation. It significantly reduces the spread of fire, heat and smoke generation without compromising critical engineering properties. ISO9001 controlled factory conditions ensure lasting protection without further maintenance.

**HR PROF SPRAY-APPLIED FIRE RETARDANT** treatment is internationally approved. Once absorbed into the surface of the wood, it combines chemically within the cell structure and allows the wood to breathe naturally. In the event of fire, the spread of flame is curbed by restricting carbon char to the immediate area.

**PRIMING** with a white acrylic, water-based primer achieves excellent opacity results on all types of hardwood, softwood and MDF. This modified co-polymer undercoat can be overcoated on site with either water-based or solvent-based paints.

**CLEAR LACQUERING** offers excellent clarity, build and resistance. Available in a range of high performance options from 5% matt up to 90% gloss, it enhances the natural grain and offers added strength and protection.

**TEKNOS WOODX OIL** is a translucent or opaque finish available in a wide range of colours. It is a low film build, matt, water-based finish suitable for use in heavy duty areas like decking, cladding and garden furniture.



GATESHEAD

0191 489 8231

Green Lane Sawmills,  
Felling, Gateshead NE10 0JS

BERWICK UPON TWEED

01289 307401

Unit BT71 Tweedside Trading Estate,  
Berwick upon Tweed TD15 2UY

Email

sales@MHSouthern.co.uk



Visit our website

MHSouthern.co.uk

Timber Importers & Sawmillers  
since 1913



# Bamboo Cladding

Suitable for both small and large projects, CTECH® Bamboo is a sustainable alternative to tropical hardwoods and composite products.

The bamboo is harvested from the forests of Asia after approximately four to six years of growth. A programme of replanting takes place to ensure a continuous supply.

The bamboo is then taken to the mills where it goes through a vigorous selection process. It is then infused with patented ceramic technology to create a high quality long lasting exterior cladding product.



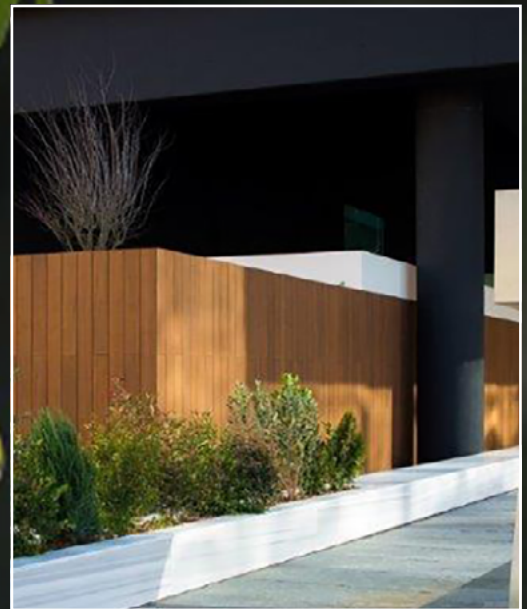
CTECH®

## Benefits of Bamboo:

- CoC Certified available
- Environmentally Friendly
- Mould Resistance
- Fire Resistance
- Termite Resistance
- Class 1 Durability
- 30-50 year Life Expectancy
- Stable & Precise

We keep the following sizes in stock on the ground:

- 12 x 100 x 1.86m groove two sides end matched
- 18 x 137 x 1.85m shiplap type end matched



\*CTECH is a registered trademark of Dasso.

Version 7.8



GATESHEAD

**0191 489 8231**

Green Lane Sawmills,  
Felling, Gateshead NE10 0JS

BERWICK UPON TWEED

**01289 307401**

Unit BT71 Tweedside Trading Estate,  
Berwick upon Tweed TD15 2UY